

Broadband equipment

FULL CYCLE OF EQUIPMENT DEVELOPMENT, PRODUCTION AND SUPPORT



DEVELOPMENT

- Hardware
- Software



MANUFACTURE

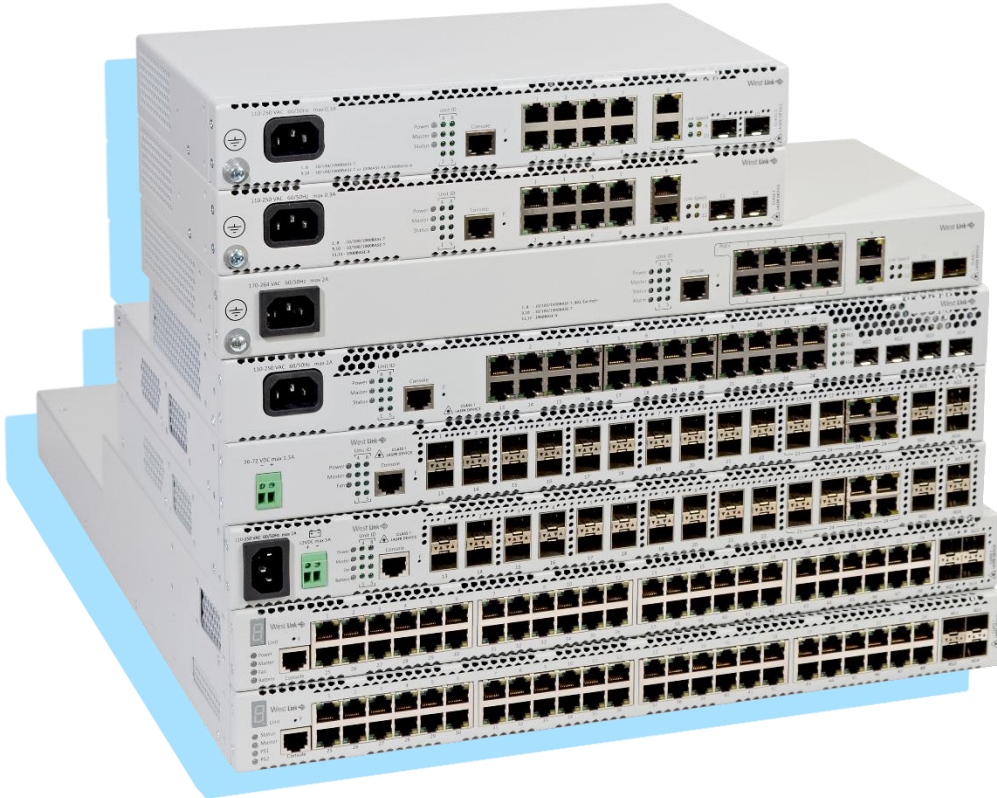
- Surface-mount technology
- Through-hole technology
- Assembling
- Software installation
- Testing of serial production equipment



MAINTENANCE

- Technical support
- Service centre
- Software updating
- Repair

ACCESS SWITCHES



- Copper and optical solutions
- Uplink 1G/10G
- Battery connection
- Industrial models
- From 8 to 48 ports solutions
- AC/DC power supplies
- PoE/PoE+ models with a budget from 65 W to 1.45 kW

ACCESS SWITCHES



WLS-1010308

WLS-1010308

- 8x1G
- 2x1G Combo
- L3
- AC



WLS-1010324

- 24x1G
- 4x10G SFP+
- L3
- AC

Model with battery is available

TECHNICAL FEATURES	WLS-1010308	WLS-1010324
Bandwidth	20 Gbps	128 Gbps
Throughput for 64-byte packets	14.7 MPPS	92.1 MPPS
VLAN table	4094	
MAC table	16384	
L2 Multicast groups	2046	
ARP tables	820	
Stacking	up to 8 devices	
Power supply	230 V AC, 50 Hz	230 V AC, 50 Hz / 48 V DC

ACCESS SWITCHES

PoE

WLS-1010308-P



- 8x1G PoE/PoE+
- 2x1G SFP
- 2x1G
- L3
- AC/DC



WLS-1010324-P



- 24x1G PoE/PoE+
- 4x10G SFP+
- L3
- AC

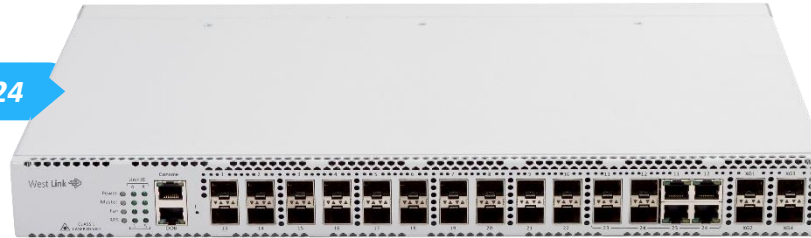


TECHNICAL FEATURES	WLS-1010308-P	WLS-1010324-P
Bandwidth	24 Gbps	128 Gbps
Throughput for 64-byte packets	17.7 MPPS	93.1 MPPS
VLAN table	4094	
MAC table	16384	
L2 Multicast groups	2046	
ARP tables	820	
Stacking	up to 8 devices	
Power supply	230 V AC, 50 Hz / 48 V DC	230 V AC, 50 Hz / 48 V DC

AGGREGATION SWITCHES

1G -> 10G

WLS-10200324



- 20x1G SFP
- 4x1G Combo
- 4x10G SFP+
- 1x10/100/1000BASE-T (OOB)
- L3
- AC/ DC
- Up to 2 power modules

TECHNICAL FEATURES	WLS-10200324
Bandwidth	128 Gbps
Throughput for 64-byte packets	95 MPPS
VLAN table	4094
MAC table	16384
L2 Multicast groups	4088
ARP tables	4023
Stacking	up to 8 devices
Power supply	230 V AC, 50 Hz / 48 V DC

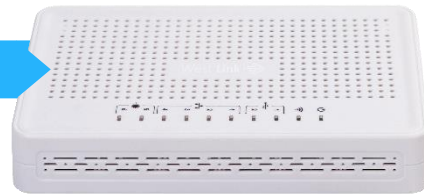
SERVICE GATEWAYS

- Service gateways: Firewall/Nat/IPS/IDS/MPLS
- FSTEC gateways: 4A protection class
- VPN gateways



SERVICE GATEWAYS

WLR-1001



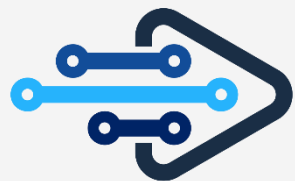
- 4 x 10/100/1000BASE-T
- 2 x 1000BASE-X SFP
- 2 x USB 2.0
- Console

WLR-2002



- 2 x 10/100/1000BASE-T
- 2 x Combo 10/100/1000BASE-T/1000BASE-X SFP
- 1 x USB 2.0, 1 x USB 3.0
- 1 slot for SD cards, Console

TECHINCAL FEATURES	WLR-1001	WLR-2002
Firewall performance	0.33 Gbps	1.97 Gbps
IPS/IDS performance	34 Mbps	88 Mbps
IPSec VPN performance	153 Mbps	0.52 Gbps
VPN tunnels	10	250
Concurrent sessions	4K	250K
FIB size	1M	1.4M
Power supply	230 V AC, 50 Hz	



West **Link**

We are open and ready to discuss business!